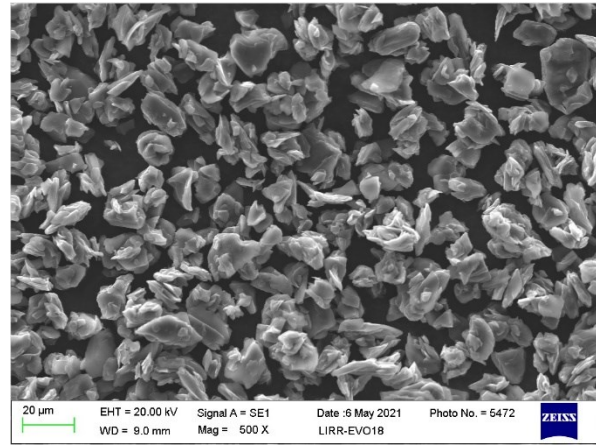


Anode Material Product Specification

APM-HC15-X5

Summary

- **Categories:**
Artificial Graphite
Using European Needle Coke
- **Feature:**
High Energy Density
Low expansion and long circulating
Excellent rate performance (2.5C)
- **Application:**
EV power, Electric tools batteries



Technical Indicators

No.	Items	Unit	Typical Value	Testing Method	
1	Particle Size (Dv)	D _{min}	μm	2.11	GB/T 19077-2016
		D10	μm	7.02	
		D50	μm	14.40	
		D90	μm	23.48	
		D _{max}	μm	40.21	
2	Tapped Density	g/cm ³	1.01	GB/T 21354	
3	Specific Surface Area	m ² /g	1.44	GB/T 19587-2017	
4	Fixed Carbon Content	%	99.982	GB/ T3521-2008	
5	First Discharge Capacity	mAh/g	354.5	Half Cell (0.1C)	
6	First Discharge Efficiency	%	95.2	Half Cell (0.1C)	
7	True Density	g/cm ³	2.24	GB/T 224533-2009	
8	Compaction Density	g/cm ³	1.65	Calendar Density Meter	

Packaging

- **Packing Material:**
Packing in standard carton packaging or executed per customer request.
- **Packing Requirement:**
Sealed with plastic lining.
- **Packing Protection and Transport Protection:**
Damp-proof and vibration prevention.

Material Handling, and Storage

- **Storage Condition:**
Common indoor storehouse (CIS): air temperature, relative humidity: ≤95%.
- **Transportation Condition:**
Trucking, railway, airline or shipping is required, air temperature, relative humidity: ≤95%.